



stop, think and live

Tennessee Child Passenger Laws	Child's Age/ Weight/ Height	Type of Seat*	Location of Seat
	0-1 year & 20 lbs. or less	Rear Facing	Rear Seat If Available
	1 yr. through 3 yrs. & Greater than 20 lbs.	Forward Facing	Rear Seat If Available
	4 yrs. through 8 yrs. & Less than 4'9" tall	Belt-Positioning Booster Seat	Rear Seat If Available
	9 yrs. through 12 yrs. & 4'9" tall or greater	Vehicle Seat Belt System	Rear Seat Recommended
	13 yrs. through 17 yrs.	Vehicle Seat Belt System	

* Seat must meet Federal Motor Vehicle Safety Standards and be used according to child safety restraint system or vehicle manufacturer's instructions.

Produced and distributed by the TN Traffic Safety Resource Service with grant funds from the Governor's Highway Safety Office and the National Highway Transportation Safety Administration. 20,000 copies at \$.10 each. Approval Number: R01.1313.114.025.09 For information call: 1.800.99.BELTS or visit us at www.tntrafficsafety.org.





If African Americans increase seat belt usage to 100 percent, an estimated 1,300 lives would be saved and 26,000 injuries prevented annually. Help make this a reality. Set a personal example and spread the message to your family.



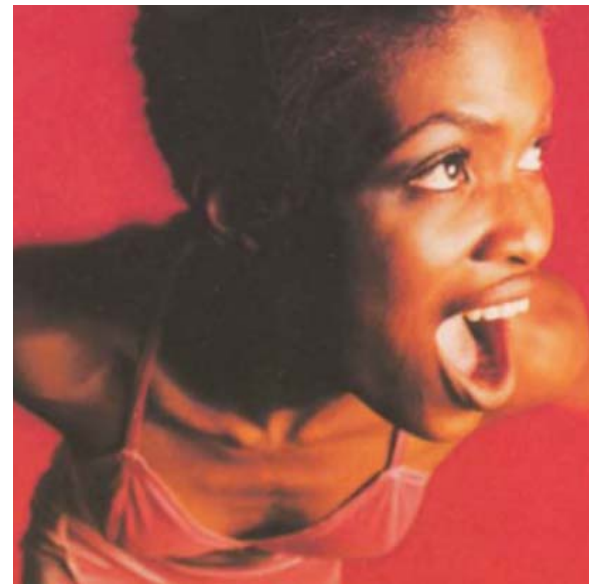
BET and NHTSA are working to improve traffic safety in the African American community. Get involved by making sure your friends and coworkers buckle up every time they ride with you.

- ### Did You Know?
- Motor Vehicle crashes are the second leading cause of death behind homicide for young black males (ages 15-24)
 - Black children (from birth to age 4) die more frequently in car crashes than any other cause.
 - Black children (12 years and under) need to be properly restrained in the back seat to protect them from injury



Close to Home

Did you know that a majority of fatal teen car crashes occur during evening hours within 25 miles of their homes? So always buckle up for every trip no matter where or how far you're going.



This Weekend

Please drive safely and be sure to buckle up. Every weekend 52 teens die in motor vehicle crashes. That's one young life every hour from Friday to Saturday night. Remember to Stop, Think and Live this weekend.



black crash facts

Just Use Them

During a crash, unbuckled drivers and passengers are more likely to be ejected or hit the steering wheel or dashboard. Avoid serious injuries or even death. Remember, a crash can happen any time. Always wear your seat belt-it only takes 3 seconds to buckle up.

